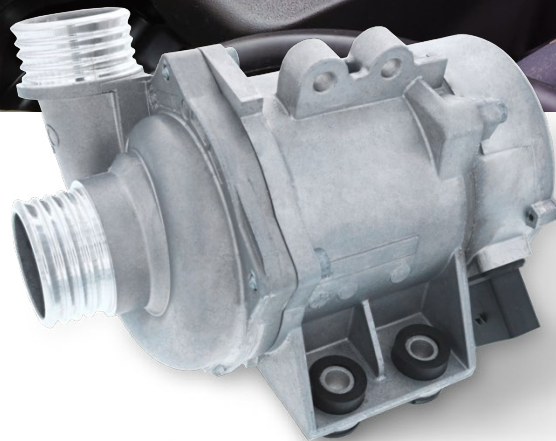




Brand of NTN corporation

ELECTRIC WATER PUMPS



When choosing SNR products, you will have:

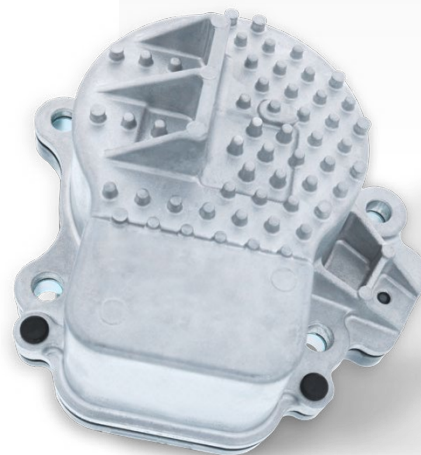
- The guarantee of an **OE water pump**
- A **range covering all the main brands** on the European car park today
- **Expertise from specialists & digital service**

Advantages of an electric water pump

- **Consumption reduction:** On/off, less friction on the belt & increased cooling efficiency
- **Control & self protection with mechatronics:** PWM, LIN (Local Interconnect Network) or CAN (Controller Area Network) communication protocols
- **Increased engine life:** Reduced tension in the belt or chain system
- **Engine Optimisation:** No constraints on the design of the engine (WPE independent of the belt/chain)

Aware of the new market needs. NTN launches its new range of electric water pumps with 5 main references.

Dedicated to vehicles with thermal and hybrid engines, the range covers 60% of the car park and are the exact replacement of OE pumps.



Did you know?

NTN MECHATRONICS: performance through innovation

Since the invention of ASB sensors in the 1980's, NTN has never stopped innovating its mechatronics for use in the automotive sectors.

SNR Electric Water Pumps

- Electric water pumps are made comprised **an aluminium housing** that protects the rotor bearing and controller unit.
- The impeller inside the pump is made of **Polyphenylene Sulfide (PPS)** which is a high-performance engineering thermoplastic which can withstand high operating temperatures, PPS is also has excellent electrical insulation properties.
- All of the components within an electric water pump have to be of **high quality and wear resistant**, this helps to insure the optimal operating temperatures required by today's complex engine systems (ICE / HEV / PHEV / BEV).



Range specifications

Car park coverage

The SNR Electric water pumps range covers 60% of the vehicles on today's car park that are fitted with electric water pumps

SNR PNs	Applications
WPE001	TOYOTA 1.8 Hybrid : Auris, Auris Break, Prius, Prius plus / 1.5 Hybrid : Yaris, Yaris Hatchback van
WPE002	BMW: 1',2', 3', 3' Touring, 3' Grand Turismo, 4' break, Gran Coupe, 5', 5' Touring, X1, X3, X4, Z4 Roadster
WPE003	TOYOTA : 1.8 Hybrid : C-HR, Corolla, Prius, Prius PHV
WPE004	BMW: 1', 3', 3' Touring, 5', 5' Touring, 6', 7' X3, X4, X5, X6 Z4 Roadster
WPE005	BMW: 1', 3', 5', 6', 7', X1, X3, X5, Z4

FOLLOW OUR NEWS

Thanks to our **TechScan'R App**, find all our technical data that you may need about our products.

Download the App on your smartphone!

Find all our tutorials for POWERTRAIN

topics on  **YouTube** :



Hydraulic tensioner:

operations and directions for use



Water pump:

how to apply gasket sealer correctly?



Best practices

when doing a timing system