



Brand of NTN Group

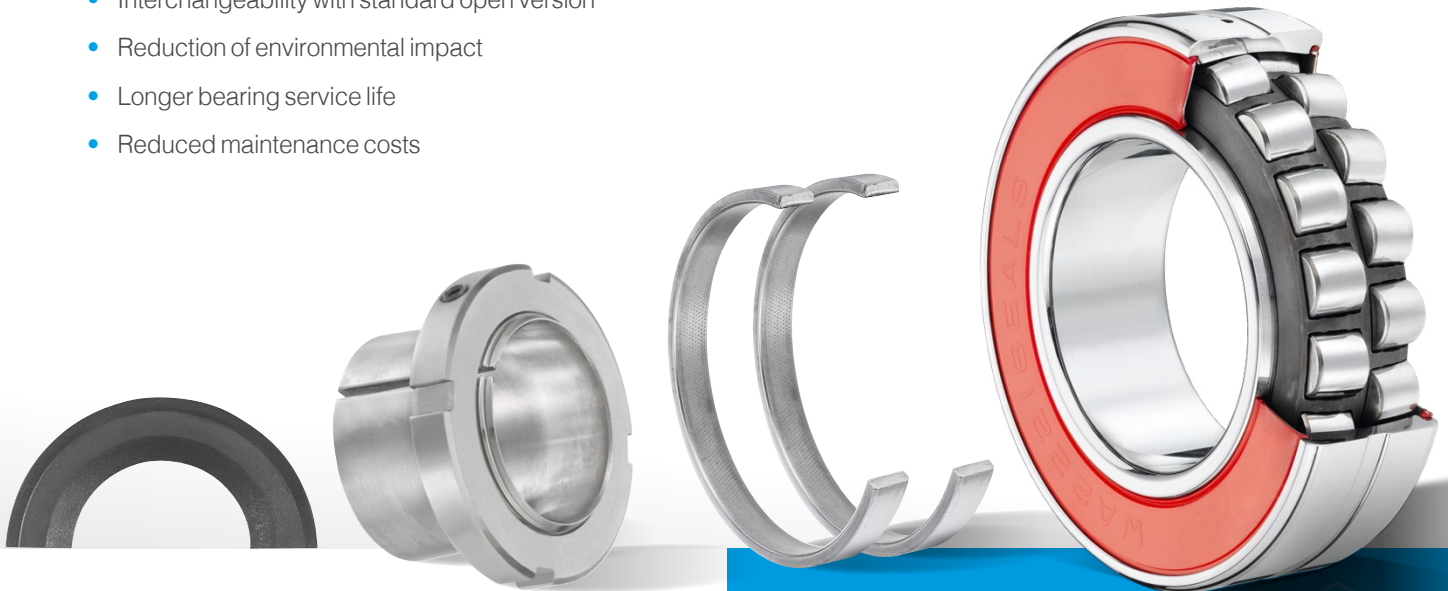


SEALED BEARING KITS FOR CONVEYORS

QUARRIES, MINES & CEMENT PLANTS

Specific features:

- Interchangeability with standard open version
- Reduction of environmental impact
- Longer bearing service life
- Reduced maintenance costs



CREATED TO INCREASE
PRODUCTIVITY, PERFORMANCE
AND RELIABILITY IN HARSH
ENVIRONMENTS

OPT FOR THE
ALL-IN-ONE



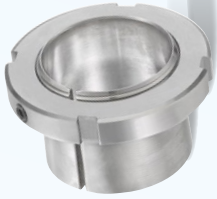
Benefits of Kits

- Complete kit for partial maintenance without Plummer block change
- Simplicity of ordering and storage (only 1 reference to manage instead of 4)
- Cheaper to buy in kit form than as individual

* Mounting in standard cast iron bearing housing (SNC SNR type)



SEALED BEARING KITS FOR CONVEYORS



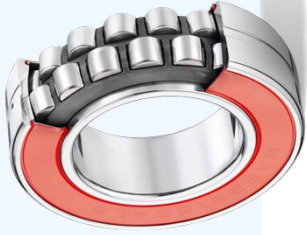
Adapter sleeve
Specific sealed version



Locating rings
Reduced width, required for fixed bearing version

FREE

Plummer block accessories



ULTRAGE™
Sealed SRB bearing with tapered bore

DS - Double lip Seals
Change required for each maintenance operation

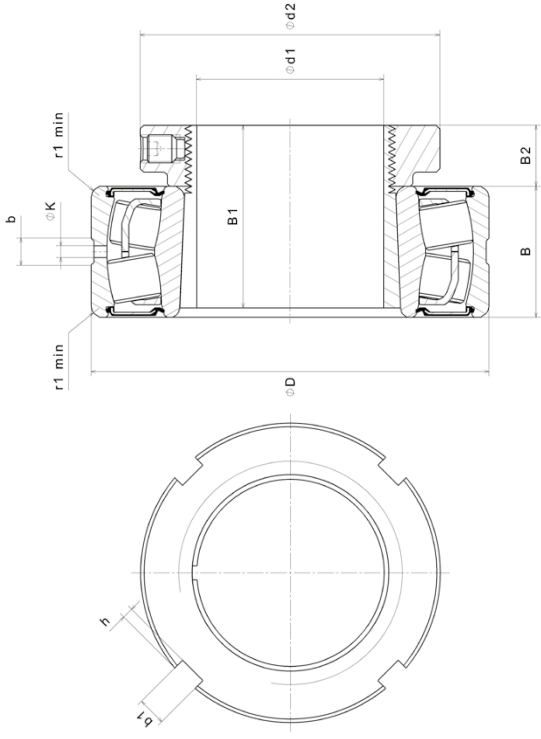
Shaft diameters:

from 35 to 90 mm

24 available KIT references:

12 with standard CN clearance
12 with C3 clearance

Upon request, other KIT configurations are possible



Description	Overall dimensions		Fatigue load limit		Load capacity		Calculation factors				Limit speed tr/min	Kit weight kg	Number of holes	Dimensions						Abutment			
	d ₁	D	B	C _u	C	C ₀	e	Y ₁	Y ₂	Y ₃				b	K	r ₁	d ₂	B ₁	B ₂	b ₁	h	D _a max.	r _a max.
Tapered bore	mm			kN							mm			mm							mm		
KIT10X22208EAKW33EE	35	80	28	12,8	116	105	0,27	2,47	3,68	2,41	2300	1	3	5,4	2,5	1,1	58	46	13	6	2,5	73,9	1
KIT10X22209EAKW33EE	40	85	28	13,8	121	113	0,26	2,64	3,93	2,58	2100	1	3	5,8	2,5	1,1	65	39	13	6	2,5	78,7	1
KIT10X22210EAKW33EE	45	90	28	15,1	130	124	0,24	2,84	4,23	2,78	1900	1,1	3	5,8	2,5	1,1	70	42	14	6	2,5	83	1
KIT10X22211EAKW33EE	50	100	31	18	155	148	0,23	2,95	4,4	2,89	1700	1,4	3	6,4	3	1,5	75	45	14	7	3	93,9	1,5
KIT10X22212EAKW33EE	55	110	34	22,1	187	181	0,24	2,84	4,23	2,78	1600	1,8	3	6,9	3	1,5	80	47	14	7	3	102,5	1,5
KIT10X22213EAKW33EE	60	120	38	27,3	226	224	0,24	2,79	4,15	2,73	1500	2,5	3	7,8	3,5	1,5	85	65	15	7	3	116,5	1,5
KIT10X22215EAKW33EE	65	130	38	29,9	244	249	0,22	3,14	4,67	3,07	1300	2,9	3	7,4	3,5	1,5	98	55	16	8	3,5	121,6	1,5
KIT10X22216EAKW33EE	70	140	40	33,8	278	287	0,22	3,14	4,67	3,07	1200	3,5	3	7,9	3,5	2	105	59	18	8	3,5	131,5	2
KIT10X22217EAKW33EE	75	150	44	38,0	324	330	0,22	3,07	4,57	3	1100	4,2	3	7,44	3,5	2	110	63	19	8	3,5	140,8	2
KIT10X22218EAKW33EE	80	160	48	45,2	384	398	0,23	2,9	4,31	2,83	1000	5,3	3	10,2	4,5	2	120	73	19	10	4	149	2
KIT10X22219EAKW33EE	85	170	51	46,5	416	417	0,23	2,95	4,4	2,89	1000	6,3	3	9,5	4,5	2,1	125	90	20	10	4	158	2
KIT10X22220EAKW33EE	90	180	55	54,3	472	495	0,24	2,84	4,23	2,78	1000	7,5	3	11	5	2,1	130	97	21	10	4	168	2

This document is the exclusive property of NTN Europe. Any total or partial reproduction hereof without the prior consent of NTN Europe is strictly prohibited. Legal action may be brought against anyone breaching the terms of this paragraph. NTN Europe shall not be held liable for any errors or omissions that may have crept into this document despite the care taken in drafting it. Due to our policy of continuous research and development, we reserve the right to make changes without notice to all or part of the products and specifications mentioned in this document. © NTN Europe, international copyright 2024.